

Smarter, Faster Transformation

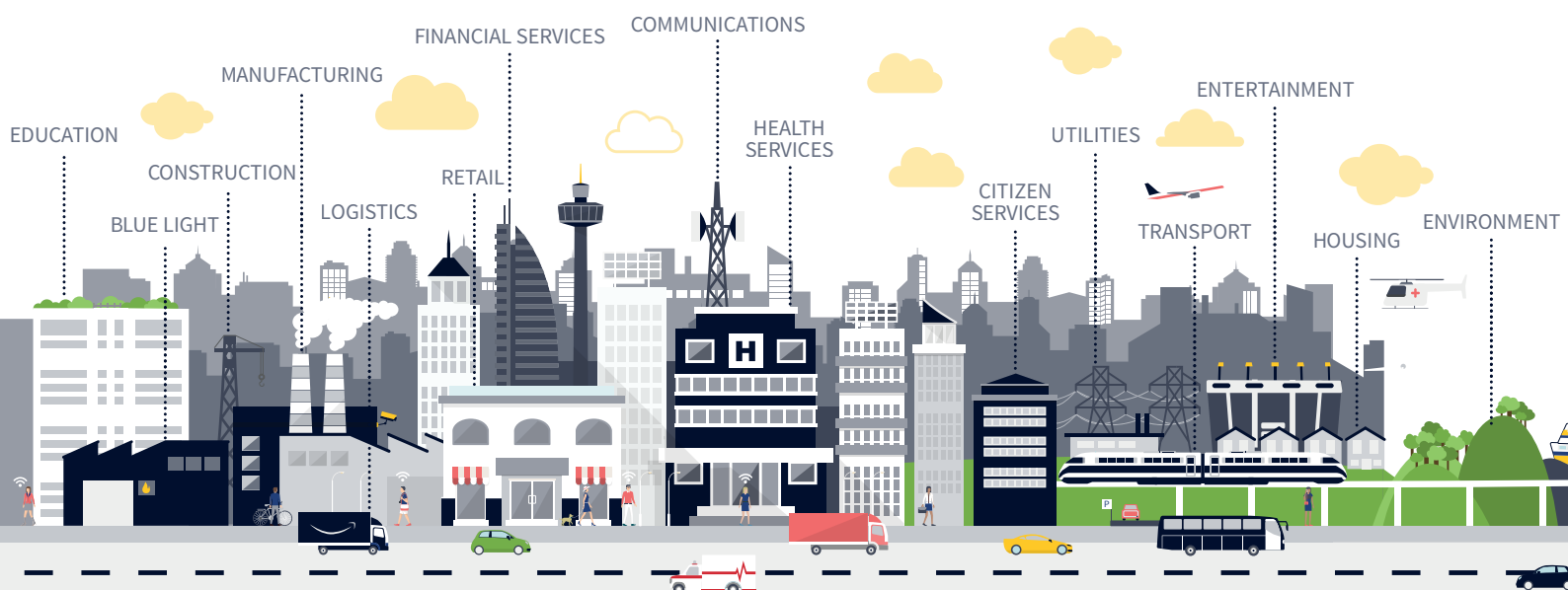
Netcall is a leading provider of AI-driven process automation and customer engagement software solutions, using advanced, AI-powered technology.

Simplified pricing and easy to understand

Netcall provides versatile, high-impact technology solutions for process automation and customer engagement. Put simply, we'll help you to achieve your organisation's goals faster by enabling meaningful customer experiences and better support for your staff.



Netcall's Liberty platform provides organisations with the tools to digitise end-to-end services and harness the power of AI.



Our customers

Leading organisations are already streamlining workflows and improving engagement with our technology.



25years

of transforming
customer experience

600⁺

customers

99%

customer
satisfaction rate

In the public sector, we serve over 300 clients, including **70% of NHS trusts**, **35% of housing associations** and **one-third of councils**.

Our solutions are also well-established in the private/commercial sector, serving approximately another 300 customers across sectors including **insurance, financial services** (where one in five UK mortgages are processed

on Liberty), **transport and infrastructure, utilities** and **retail and consumer goods**.

By driving digital self-service, we enable these organisations to create greater capacity and efficiency through automation of key processes. This significantly reduces call volumes and wait times in contact centres.

Our customers view us as genuine partners. We're personable, responsive, practical and totally committed - from design and delivery, to training and support - building long-term relationships, project after project.



Liberty: The AI-powered Platform for Transformation

Using advanced, AI-powered technology, Netcall provides versatile, high-impact technology solutions for process automation and customer engagement.

Liberty Create

LOW-CODE APPLICATION PLATFORM

Build and develop bespoke applications using our low-code application development solution. Revolutionise how you design, deploy and adapt enterprise-grade tools for better workflow efficiency and customer experiences.

Liberty IDP

INTELLIGENT DOCUMENT PROCESSING

Automate and optimise document workflows with AI-driven intelligent document processing, saving significant resource time and money.

Liberty RPA

ROBOTIC PROCESS AUTOMATION

Streamline workflows and enhance efficiency with intelligent, AI-powered robotic process automation, freeing employees from repetitive tasks.

Liberty Converse

OMNICHANNEL CONTACT CENTRE

Manage customer communication effortlessly with AI-powered virtual assistants, chatbot integration, generative AI summarisation, omnichannel communication, multilingual translation and video calling for faster issue resolution.

Liberty Spark

PROCESS MAPPING & IMPROVEMENT

Transform business processes with an intuitive mapping and improvement solution, accelerating transformation and ensuring compliance.

AI

GENERATIVE AI & MACHINE LEARNING

Liberty delivers enterprise-grade AI in a unified platform, using generative AI, natural language processing and machine learning to enhance customer experiences and operational workflows.



Amillan is a managed service provider delivering comprehensive managed IT services tailored to the unique requirements of businesses.

Want to know more about Netcall or our AI partners?
Get in touch with amillan today

+44 0121 704 5840 | enquiries@amillan.co.uk | www.amillan.co.uk